

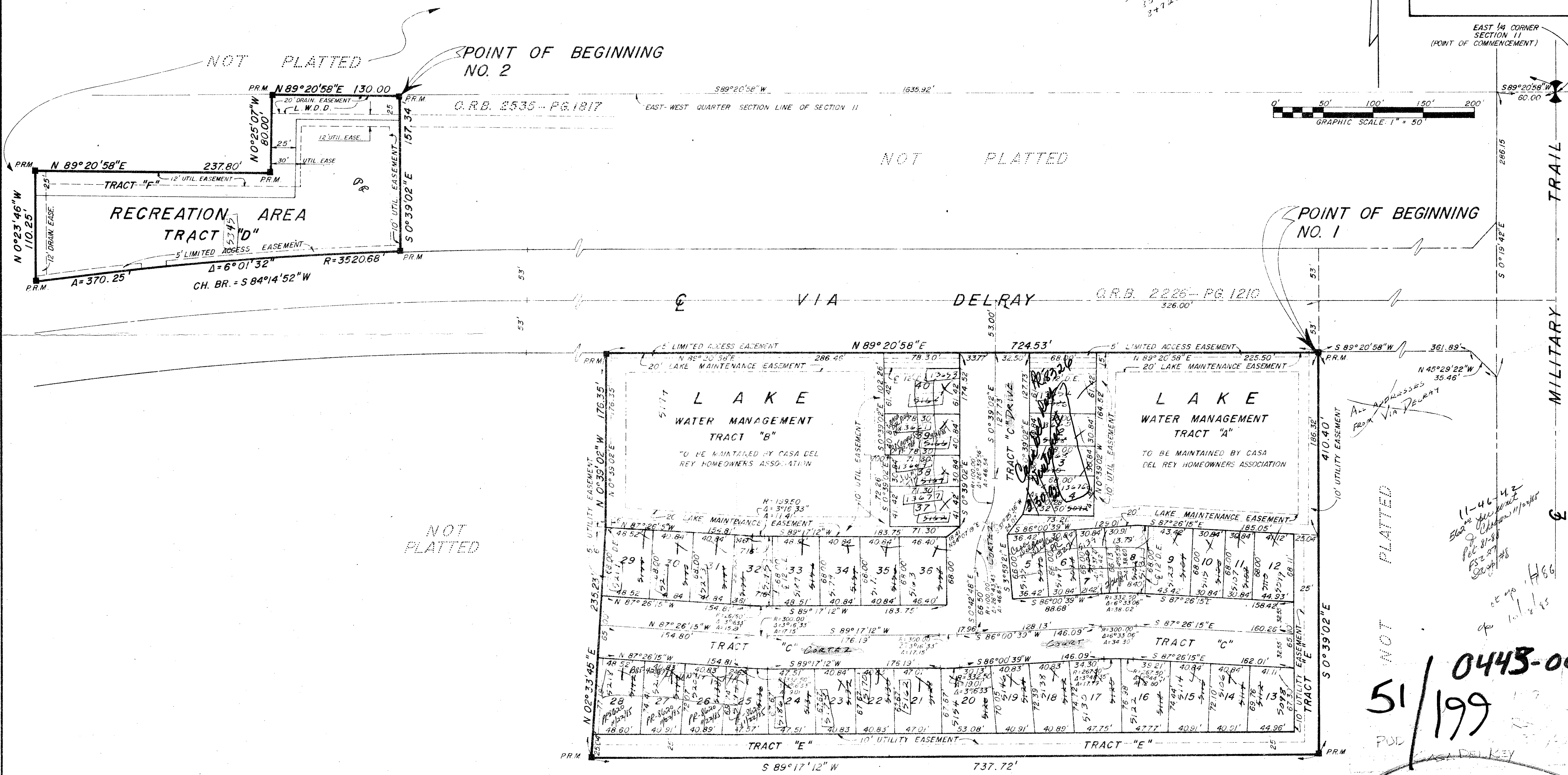
DRAWING NUMBER
51/199

CASA DEL REY (P.U.D.) PLAT NO. 1

SECTION II, TOWNSHIP 46 SOUTH, RANGE 42 EAST
PALM BEACH COUNTY, FLORIDA
IN 2 SHEETS SHEET NO. 2
JANUARY, 1985

51
199

STATE OF FLORIDA }
COUNTY OF PALM BEACH }
This Plat was filed for record at _____ M.
this _____ day of _____
19 _____, and duly recorded in Plat Book No. _____
on page _____
JOHN B. DUNKLE, Clerk Circuit Court
By _____, D.C.



DRAWING NUMBER

DRAWING NUMBER

DRAWING NUMBER

ROSSI AND MALAVASI
ENGINEERS, INC.
WEST PALM BEACH,
FLORIDA

CASA DEL REY
PLAT NO. 1
IN 2 SHEETS SHEET NO. 2

Date	JANUARY, 1985	Designed	H. ANDERSON	Scale		Sheet	
Drawn	D. FREDERICK	Job No.		File No.		of 2	
Checked							

THIS INSTRUMENT WAS PREPARED BY JOSEPH M. TUCKER IN THE OFFICES OF ROSSI AND MALAVASI ENGINEERS, INC. 1675 PALM BEACH LAKES BLVD WEST PALM BEACH, FLORIDA 33411 PHONE: 737-6546